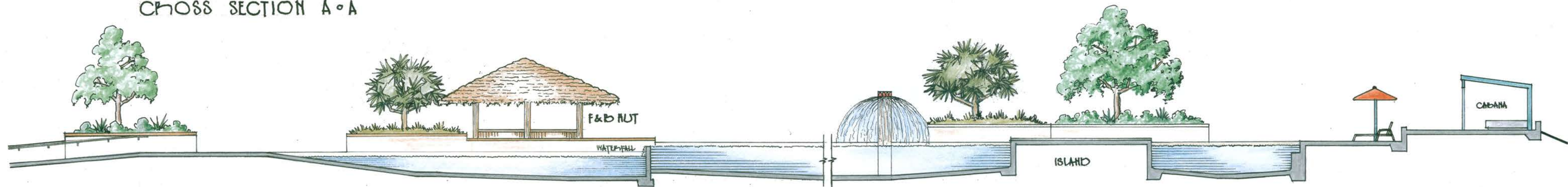


CROSS SECTION A-A



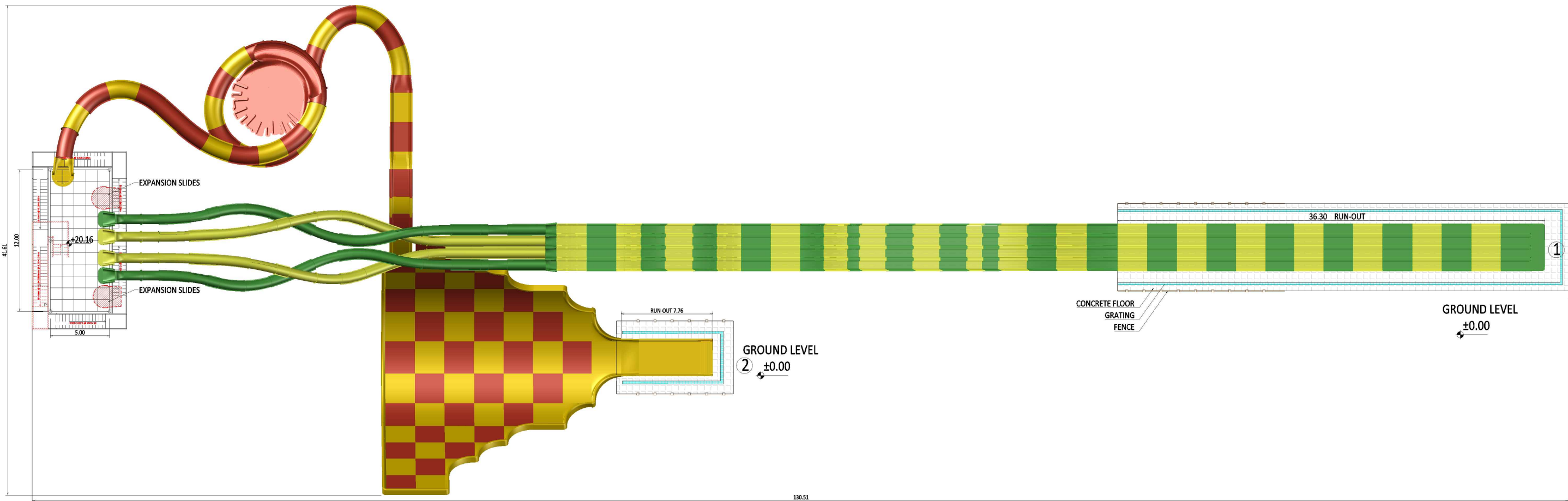
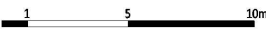
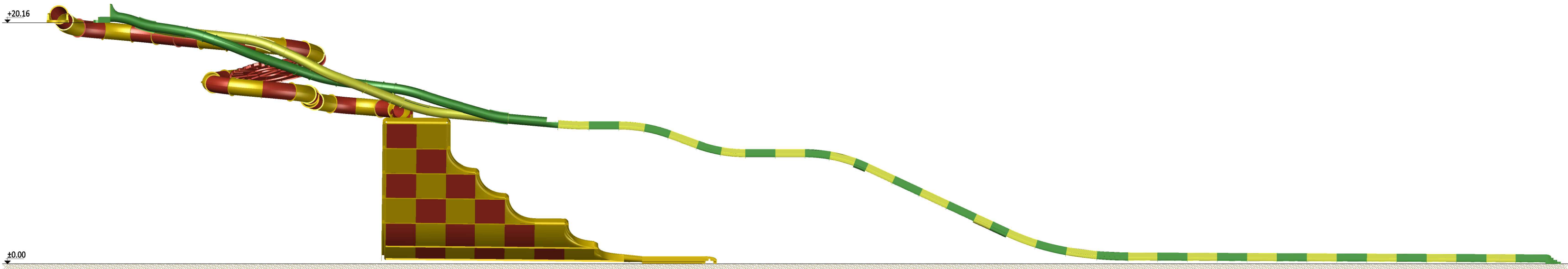
CROSS SECTION B-B



LAGOON POOL PLAN



SIDE VIEW



CITY OF SWAN  
**RECEIVED**  
10 Jun 2020



GEBKİM OSB REFAK BAYDUR CAD.  
NO:6 41480 DİLOVASI/KOCAELİ  
Tel.: (+90 262) 656 64 67 (pbx)  
Fax: (+90 262) 656 64 75  
e-mail: polin@polin.com.tr  
web: www.polin.com.tr

Project Number 14790-WS-02  
Date 10-07-2019

THE MAZE EXPANSION PROJECT

Australia

ALTERNATIVE 2

Drawing Units Metric  
Paper Size A2  
Scale 1/350

Drawn by Mahmut Acar  
Checked by Özgen Öztürk  
Approved by Mine Pakış  
Design Technician Architect Design Manager

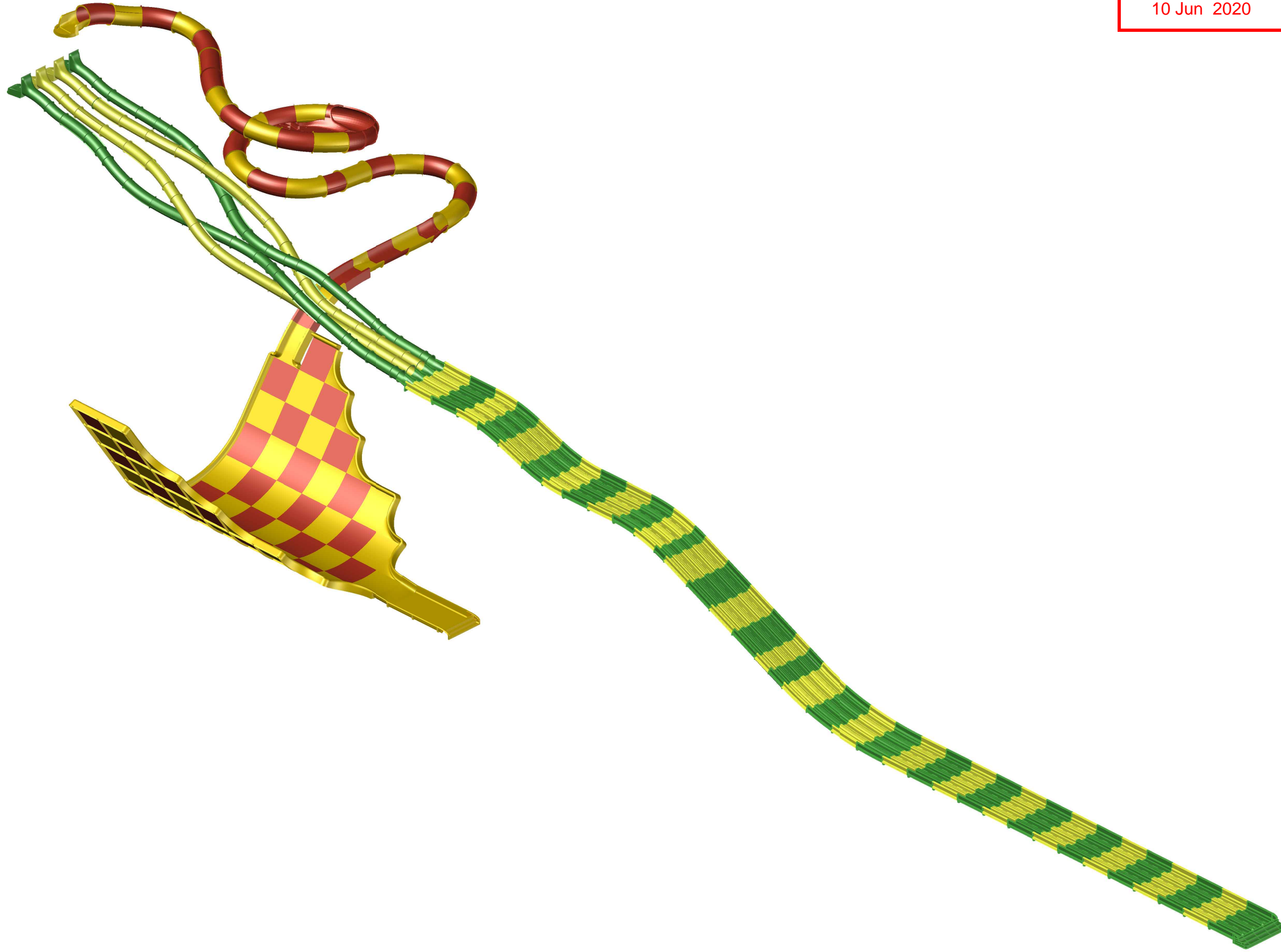
NOTES:  
\*NOT FOR CONSTRUCTION

These drawings, illustrations and the design concepts expressed herein are the exclusive property of Polin Waterparks and Pool Systems. These drawings or illustrations are confidential and for the exclusive use of those whom sent. Any violation of this purpose, particularly the use of these prints for the duplication of design concept will be prosecuted under all remedies provided by law.

Doküman No:07 TR 03 Rev4 05-02-2015

WATER SLIDES LIST

1-a		TYPE	825
TWISTER RACER		LENGTH	39.84 M
		HEIGHT	20.16 M
EN 1069-1 CLASSIFICATION		TYPE 4	
1-b		TYPE	825
TWISTER RACER		LENGTH	39.32 M
		HEIGHT	20.16 M
EN 1069-1 CLASSIFICATION		TYPE 4	
1-c		TYPE	825
TWISTER RACER		LENGTH	39.32 M
		HEIGHT	20.16 M
EN 1069-1 CLASSIFICATION		TYPE 4	
1-d		TYPE	825
TWISTER RACER		LENGTH	39.84 M
		HEIGHT	20.16 M
EN 1069-1 CLASSIFICATION		TYPE 4	
1-e		TYPE	4x650x900
TWISTER RACER		LENGTH	50.70 M
		HEIGHT	11.43 M
EN 1069-1 CLASSIFICATION		TYPE - 6.2	
1-f		RUN-OUT (M)	36.30 M
2-a		TYPE	1400
BLACKHOLE		LENGTH	F.SAW+31.28 M
		HEIGHT	20.16 M
EN 1069-1 CLASSIFICATION		TYPE 10	
2-b		TYPE	Ø1400
BLACKHOLE		LENGTH	35.92 M
		HEIGHT	14.90 M
EN 1069-1 CLASSIFICATION		TYPE 3	
2-c		HEIGHT	12.14 M
TSUNAMI			
EN 1069-1 CLASSIFICATION		TYPE 9	
2-d		RUN-OUT (G3000)	7.76 M



CITY OF SWAN  
**RECEIVED**  
10 Jun 2020



**PolinWaterparks**  
THE EXPERIENCE



GEBKİM OSB REFIK BAYDUR CAD.  
NO:6 41480 DİLOVASI/KOCAELİ  
Tel.: (+90 262) 656 64 67 (pbx)  
Fax: (+90 262) 656 64 75  
e-mail: polin@polin.com.tr  
web:www.polin.com.tr

Project Number	Date
14790-WS-02	10-07-2019

## THE MAZE EXPANSION ROJECT

Australia

### PERSPECTIVE

Drawing Units	Metric
Paper Size	A3
Scale	

Drawn by	Checked by	Approved by
Mahmut Acar Design Technician	Özgen Öztürk Architect	Mine Pakış Design Manager

#### NOTES:

\*NOT FOR CONSTRUCTION

These drawings, illustrations and the design concepts expressed herein are the exclusive property of Polin Waterparks and Pool Systems. These drawings or illustrations are confidential and for the exclusive use of those whom sent. Any violation of this purpose, particularly the use of these prints for the duplication of design concept will be prosecuted under all remedies provided by law.

Doküman No:07 TR 03 Rev:4 05-02-2015





## THE BARN • EAST ELEVATION

1:100

### MATERIALS & FINISHES LEGEND

- |                           |   |
|---------------------------|---|
| 1. ROOF & WALL CLADDING   | ZINCALUME CUSTOM OPB CORR CLADDING<br>FIXED OVER STEEL FRAME SHED STRUCTURE.                      |
| 2. WALL CLADDING PANELS   | HARDPLANET TIMBER GRAIN FINISH WITH<br>WASHED PAINT FINISH NATURAL.                               |
| 3. OPEN ENTRY STRUCTURE   | P.H.S. STEEL FRAME POWDERCOAT FINISH  |
| 4. WINDOWS TO DINING      | ALUMINIUM FRAME FIXED GLASS POWDERCOAT FINISH   |
| 5. SUNHOODS               | ZINCALUME CORR. CLADDING FIXED TO<br>POWDERCOATED METAL FRAME                                     |
| 6. OUTDOOR DINING FASCIAE | VERTICAL TIMBER BATTENS FIXED OVER STEEL FRAME<br>STAINED FINISH (ALTERNATIVE - MOONWOOD BATTENS) |
| 7. ROOF SKYLIGHTS         | SKYSPAN CORRIMATE OPAL ACRYLIC 900 SQ (H=11 P=60)   |

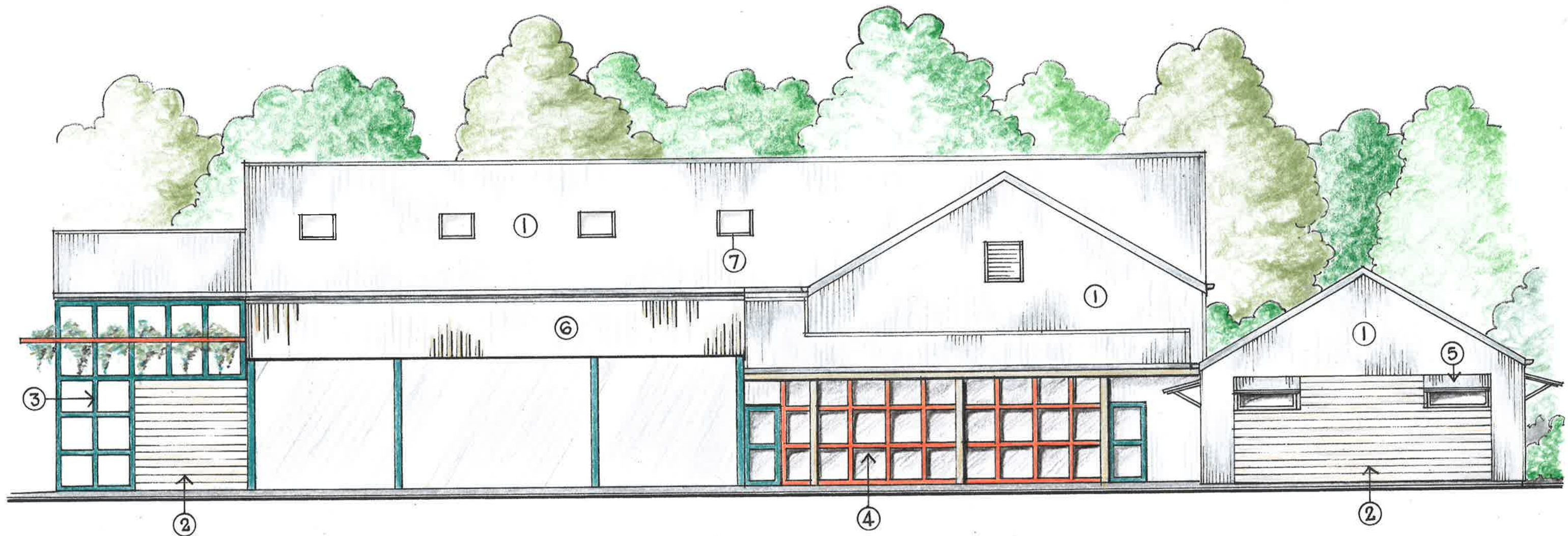
BARN CAFE OUTDOOR DECK ADD. B 5.3.20  
AMENDMENTS HP DATE

**OUTBACK SPLASH**  
**THE BARN F&B FACILITY**  
**CONCEPT SKETCH PLANS**

Dwg. No. G2636 CSN-02 B 25.3.20

alan griffith • architect





THE BARN • NORTH ELEVATION

1:100

SKETCHES ADDED

B 5.3.20

AMENDMENTS

Nº DATE

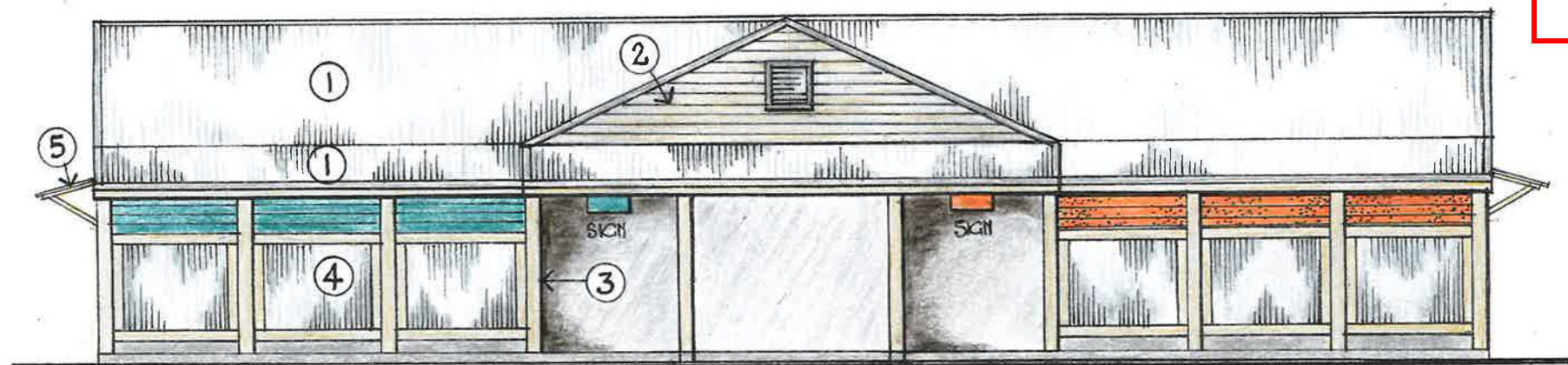
OUTBACK SPLASH  
THE BARN F&B FACILITY  
CONCEPT SKETCH PLANS

Dwg. No. G2636 CSK-03B 25.3.20

alan griffith • architect

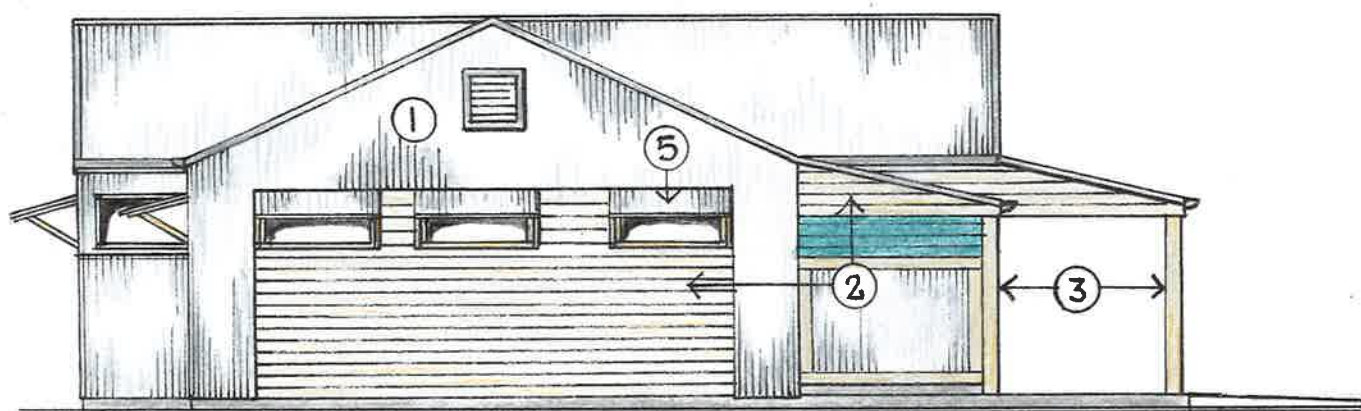


10 Jun 2020



EAST ELEVATION

1:100

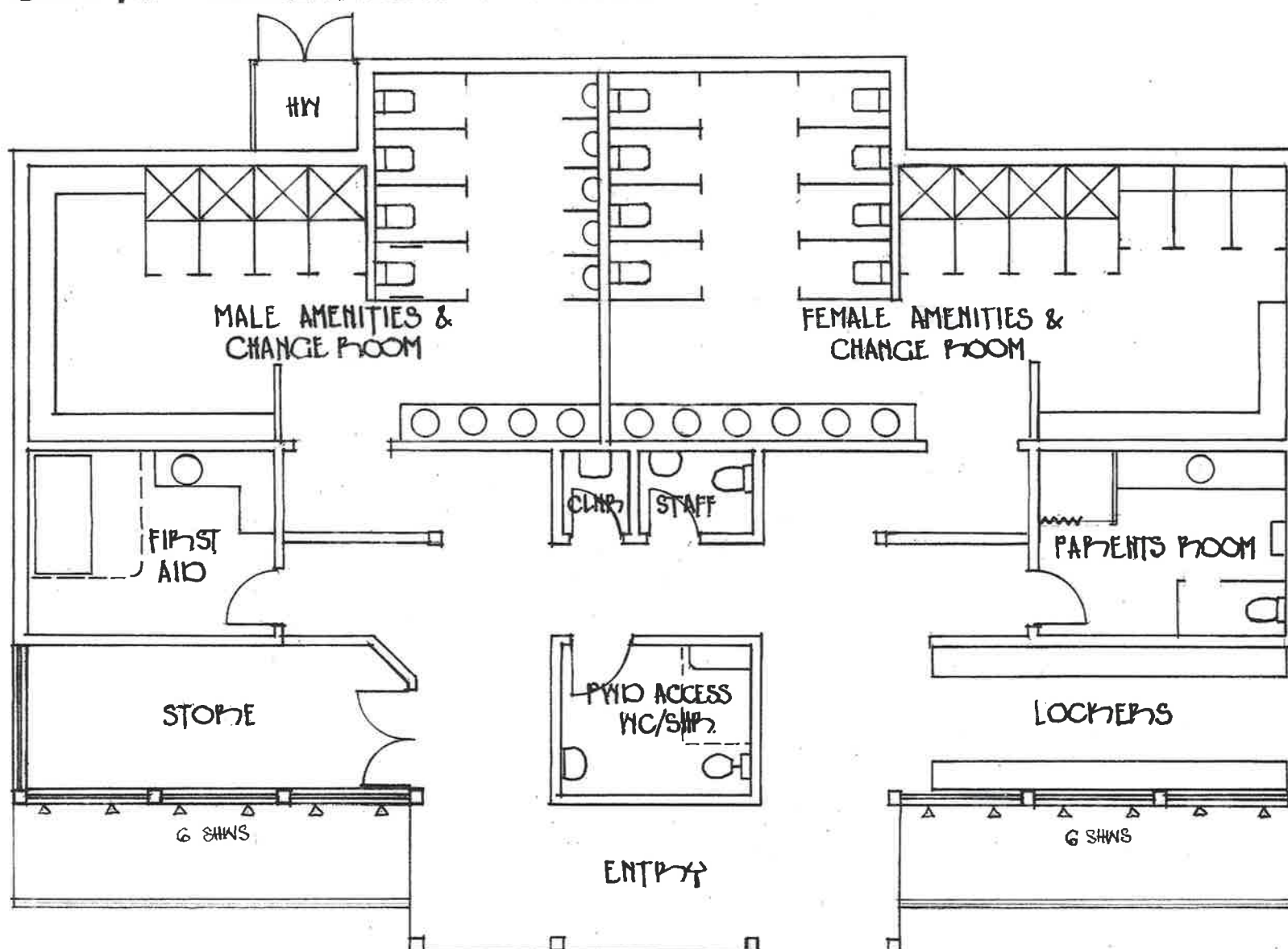


SOUTH ELEVATION

1:100

## LEGEND

1. ZINCALUME CUSTOM ORB CORR.  
CLADDING - STEEL FRAMED SHED
2. HARDY-PLANK WALL CLADDING TIMBER  
GRAIN FINISH - WASHED PAINT NATURAL.
3. 200 SQ RECYCLED HW FEATURE POSTS  
TO VERANDAS NATURAL FINISH.
4. ACED CORR. IRON FIXED TO 150x70  
HW SURROUND FRAMES - FINISH AS FOR POSTS.
5. WINDOW HOODS - CLADDING AS FOR ROOF/  
WALLS FIXED TO TIMBER FRAMING.



FLOOR PLAN

1:100

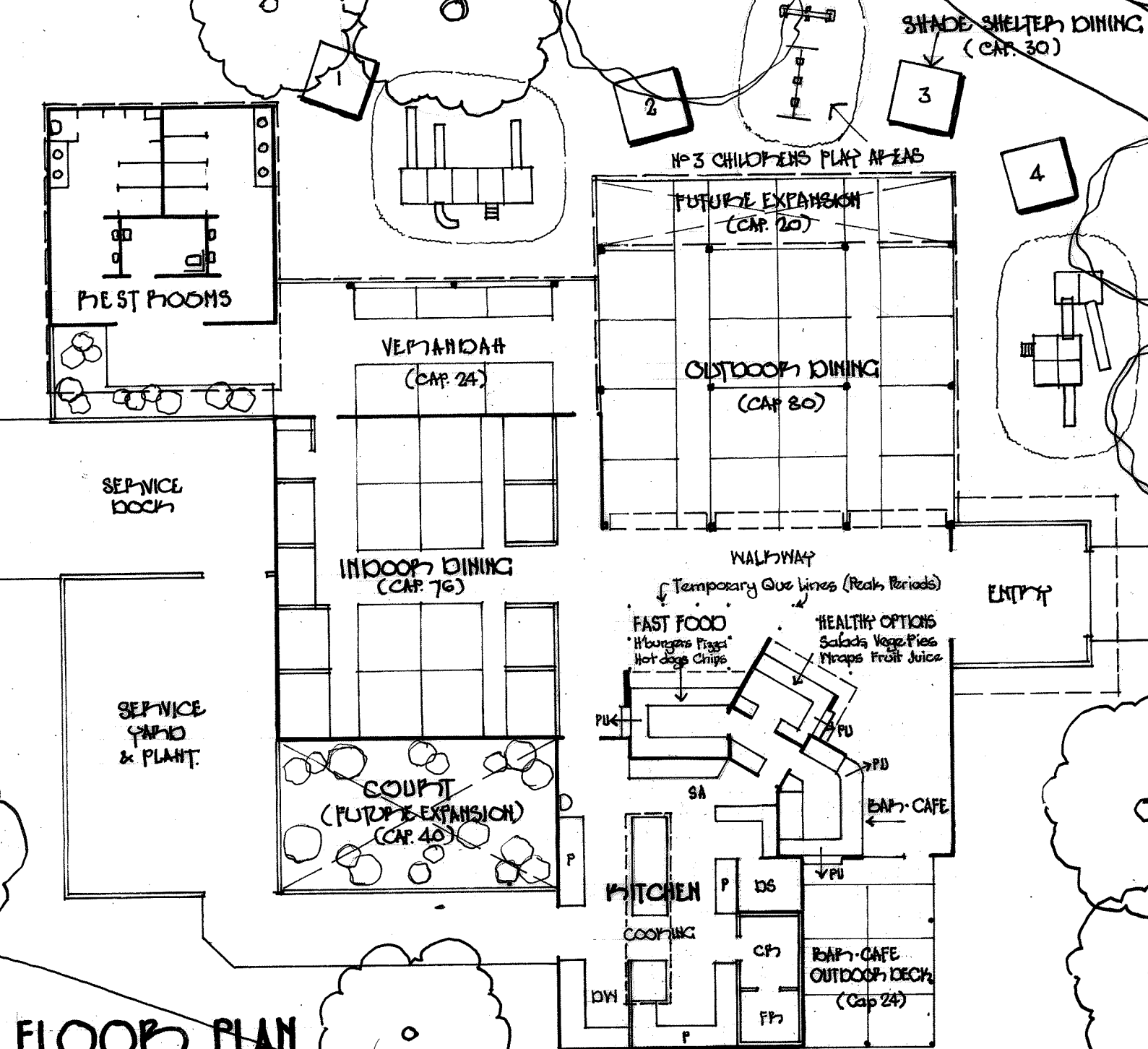
TOILETS INCREASED, STORE ADDED BY 3.2.20  
AMENOMENTS NO DATEOUTBACK SPLASH  
LAGOON POOL CHANGE  
CONCEPT SKETCH PLANS

Dwg No G2636 CSK-O4B 25.3.20

alan griffith • architect

## FLOOR PLAN

TOPIBOLANCE SLIDE COMPLEX



FOOD COURT ALTERATIONS B 5.3.20  
AMENDMENTS N DATE

**OUTBACK SPLASH**  
THE BARN F&B FACILITY  
CONCEPT SKETCH PLANS

DWG. No. G2636 CSK-01 B 20.2.20

alan griffith • architect